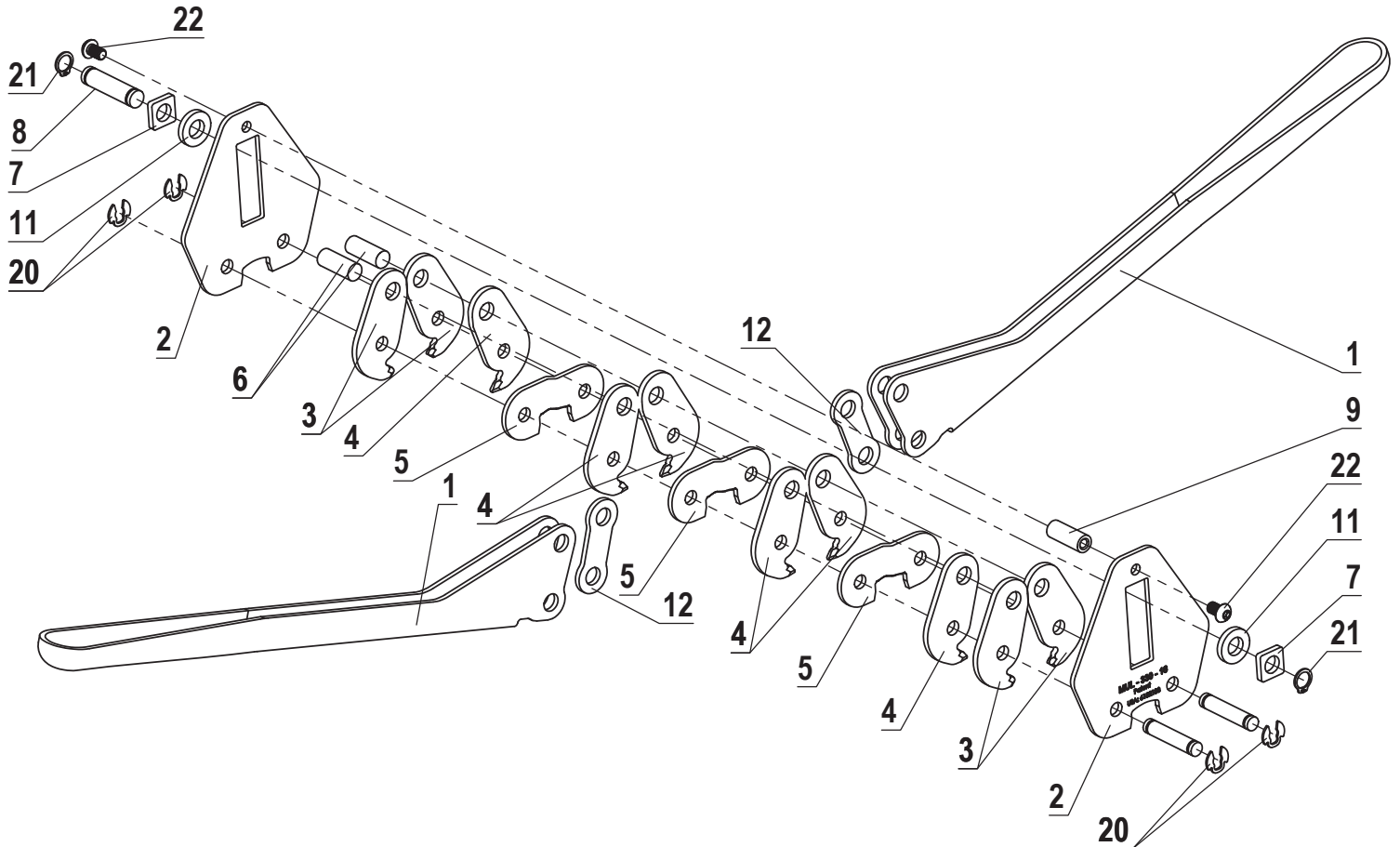


MUL-330

5/8' Heavy Duty PET Sealer



KEYNo	DESCRIPTION	QTY.
330-01	HANDLE	2
330-02	SIDE PLATE	2
330-03	OUTER JAW	4
330-04	INNER JAW	6
330-05	ANVIL	3
330-06	JAW PIN	2
330-07	SLIDE PLATE	2
330-08	SLIDE PIN	1

KEYNo	DESCRIPTION	QTY.
330-09	SPACER PIN	1
330-10	ANVIL PIN	2
330-11	SLIDE RING	2
330-12	ARM	2
330-20	KLIPRING 5/16"	4
330-21	RETAINING RING 12	2
330-22	BUTTON HEAD CAP SCREW M6x10	2